

Mon., November 26, 2018 GA

- Complete warm-up.
- P. 1 and 3: Collect notes from front table.
- P. 5: Collect loom.
- P. 6: Open sketchbook to blank page

Today, we will:

- P. 1 and 3: Introduce Greek Vase Project
- P. 5: Weave: Dovetail
- P. 6: Begin Op Art practice

When you have to go back to work after the holidays



Warm-up: Answer the following in at least 2-3 complete sentences.

What was the best part of the holiday weekend? Why?

SB 7: Fast Food, due 11/28 or 11/29

- Create drawing of food you would order at a fast food restaurant
- Include the food, wrappers, toys, etc
- Fill the page
- Add color or shading



Mon., Nov. 26, 2018 Intro

- Complete warm-up.
- Collect project from drawer.

Today, we will:
Work on Op Art Project—last day to
work in class. **PROJECT DUE FRIDAY**

When you have to go
back to work after the holidays



Warm-up: Answer the
following in at least 3-5
complete sentences.

**What was the best part
of the holiday
weekend? Why?**

SB 7 and SB 8: Due 11/29



7: Free Sketch

8: Roller Coaster

- Fill page
- Color/shade
- Effort—min. 30 minutes
EACH



Tues., November 27, 2018 GA

- Complete warm-up.
- P. 1 and 3: Collect Mythology chart from front
- P. 5: Collect loom
- P. 6: Open sketchbook to Op Art ideas

Today, we will:

- P. 1 and 3: introduce mythology
- P. 5: Weaving--interlocking
- P. 6: Op Art project



Warm-up: Answer the following in at least 2-3 complete sentences.

Which style of Greek Vases is this? How were the details created? Check notes if necessary.

Berlin Painter, Athena

SB 7: Fast Food, due 11/28 or 11/29

- Create drawing of food you would order at a fast food restaurant
- Include the food, wrappers, toys, etc
- Fill the page
- Add color or shading



Tues., Nov. 27, 2018 Intro

- Complete warm-up.
- Open sketchbook to sculpture notes.

Today, we will:
Review sculpture
Introduce tube sculpture project



Warm-up: Answer the following in at least 3-5 complete sentences.

What type of sculpture is this work? This sculpture is first modeled in clay. The final result is bronze. How is it made?

Coderch and Malavia, The Flight of the Swan, 2015, bronze.

SB 7 and SB 8: Due 11/29



7: Free Sketch
8: Roller Coaster

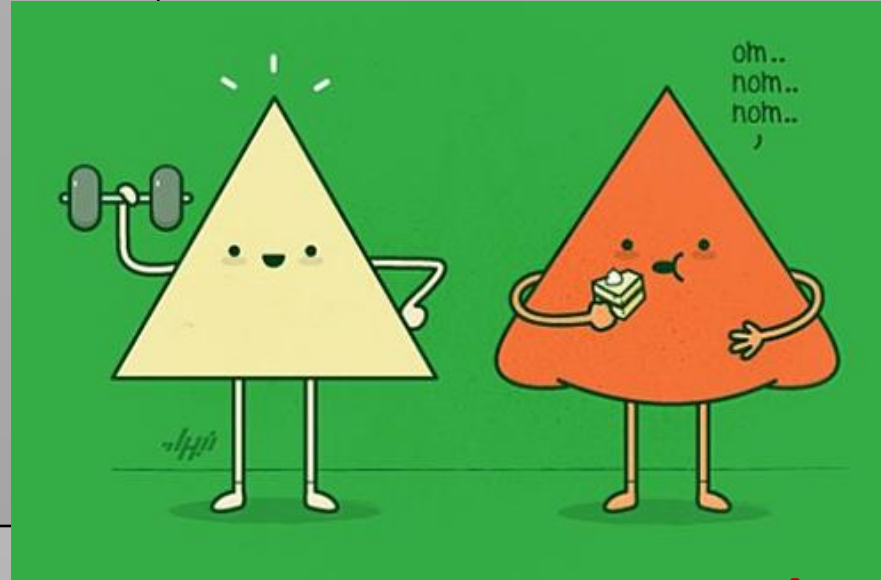
- Fill page
- Color/shade
- Effort—min. 30 minutes EACH



Wed., November 28, 2018 GA

Can you figure out the visual puns?

➤ Turn in sketchbook.



Today, we will:

- 1: Work on clay slab project
- 3: Finish mythology, begin research
- 5: Weave—vertical stripes, twining

SB 8 and 9: Due 12/5 or 12/6

8: Moving object (car, animal, people, etc.)

- Be creative
- Fill page
- Color/shade

9: Free sketch

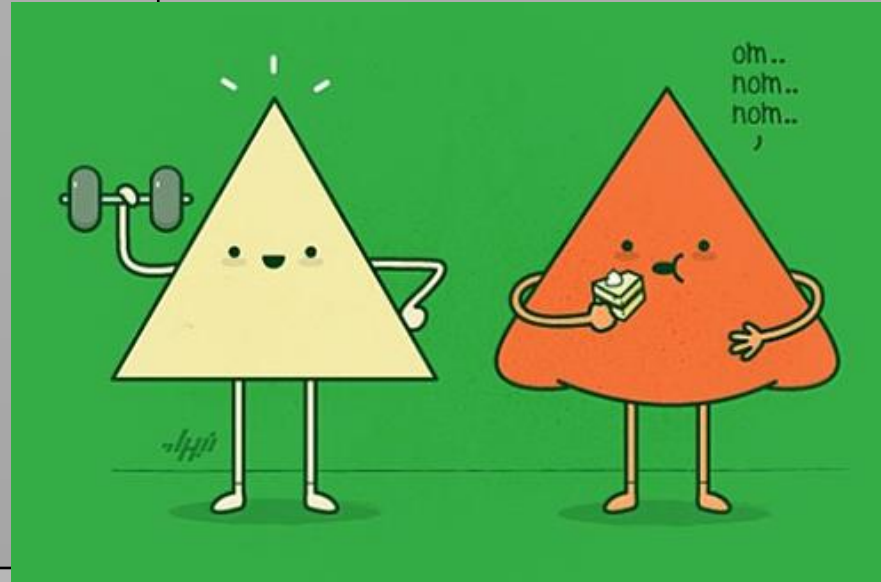
- School appropriate
- Fill page
- Color/shade



Thur., Nov. 29, 2018 **Intro**

➤ Turn in sketchbook.

Can you figure out the visual puns?



Today, we will:
Make tubes for tube sculpture

SB9: Illustrate the Wind

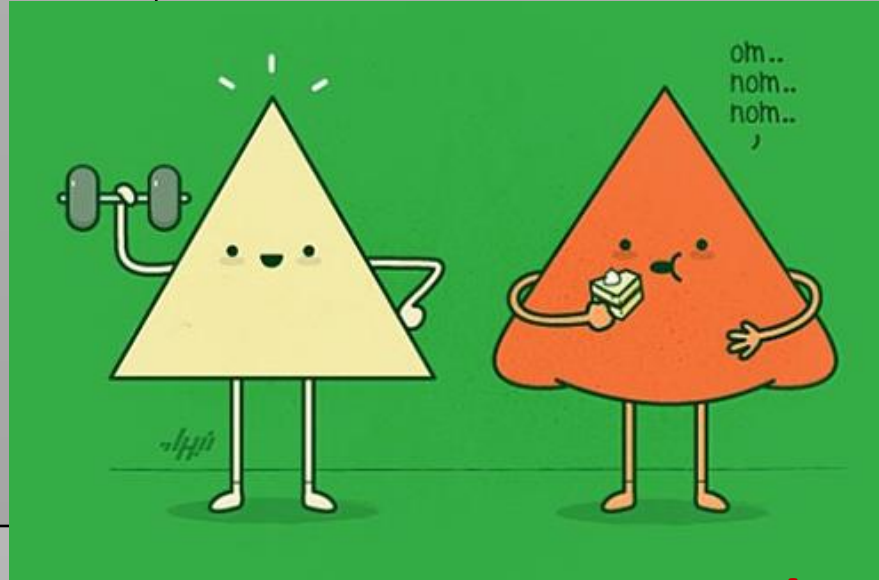
- Fill page
- Color/shade
- Effort—min. 30 minutes



Thur., November 29, 2018 GA

Can you figure out the visual puns?

➤ Turn in sketchbook.



Today, we will:
Work on Op Art Project

SB 8 and 9: Due 12/5 or 12/6

8: Moving object (car, animal, people, etc.)

- Be creative
- Fill page
- Color/shade

9: Free sketch

- School appropriate
- Fill page
- Color/shade

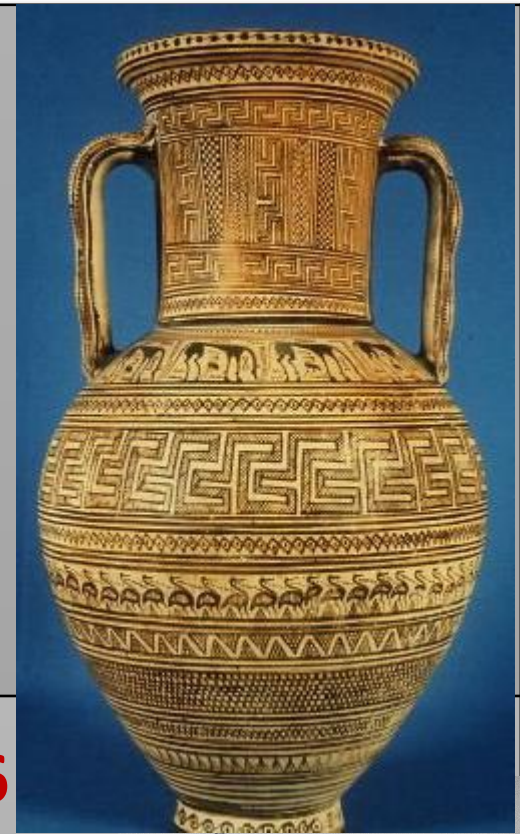


Fri., November 30, 2018 GA

- Collect sketchbook from front table.
- Complete warm-up.

Warm-up: Answer the following in 2-3 complete sentences.

What is the style of the Greek Vase at right? Give 2 details about this particular style. Use notes if necessary.



Today, we will:

- 1: Work on Mythology research and sketch
- 3: Work on Mythology research and sketch
- 5: Weave—Knots
- 6: Work on Op Art Project

SB 8 and 9: Due 12/5 or 12/6

8: Moving object (car, animal, people, etc.)

- Be creative
- Fill page
- Color/shade

9: Free sketch

- School appropriate
- Fill page
- Color/shade



Fri., Nov. 30, 2018 Intro

- Collect sketchbook from front table.
- Complete warm-up.



Warm-up: Answer the following in 3-5 complete sentences.

What type of sculpture is the work to the left? This is larger than life size and has a matching pair. What do you think this sculpture was used for? Who might the face be?

Today, we will:
Complete tubes and begin construction.

SB9: Illustrate the Wind

- Fill page
- Color/shade
- Effort—min. 30 minutes

